

“FLIN” MACHINE

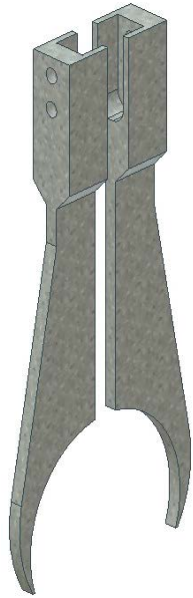
AUTOMATIC SPOOL PRODUCTION MACHINE FOR AUTOMATIC CARDBOARD SPOOL PRODUCTION

- This machine's work process cycle consists in retrieving the cores from the TATU machine discharge device, of applying a layer of hot-melt glue onto the side edges of the core and of holding the two flanges pressed onto said side edges. Once the parts have been glued together, the machine discharges the spool on the appropriate guide and automatically starts a new cardboard spool production cycle.
- The machine is also capable of working independently, but it has been engineered to be combined in a production line arrangement composed by “TATU+FLIN+UNIVERSAL”. If the machine is installed in-line with other machines, it is necessary to install the “DBF FOT 00” photocell on the discharge unit, for automatic start-stop functions.
- Process automation is provided via PLC controls with an operator panel displaying the various messages and commands for safe and smooth system operation.
- It is also possible to program early machine start-up for hot-melt glue heat-up functions, to set the gluing time and any possible alarms. The gluing time depends of the type of glue that is implemented. However, the type of glue we supply requires a heat-up time of 2 hours prior to starting up the production work cycles.
- A counter unit is provided for setting the machine to stop once the number of spools set and entered and selectable from 1 to 9999, has been reached.
- All the machine tools and adjustments have been designed for the fastest production changeover times. It is in fact possible to change the overall machine settings in merely 15 minutes.
- Versatility, user-friendly machine adjustment options and impressive production output rates result in highly effective product flexibility, thereby preventing uselessly long product shelf-life and stocking times as well as production cost reductions.



➤ **F PNZ 04 D00 - F PNZ 14 D00** "CORE CLAMPS"

In order to be able to work, the machine requires a moulded core clamp for each different size of the external core diameter to be retrieved. It must also be of the appropriate thickness so that it cannot go into contact with the glue. The core clamps are normally supplied in two thicknesses:



F PNZ 04 D...

4mm for 12÷30mm spool lengths

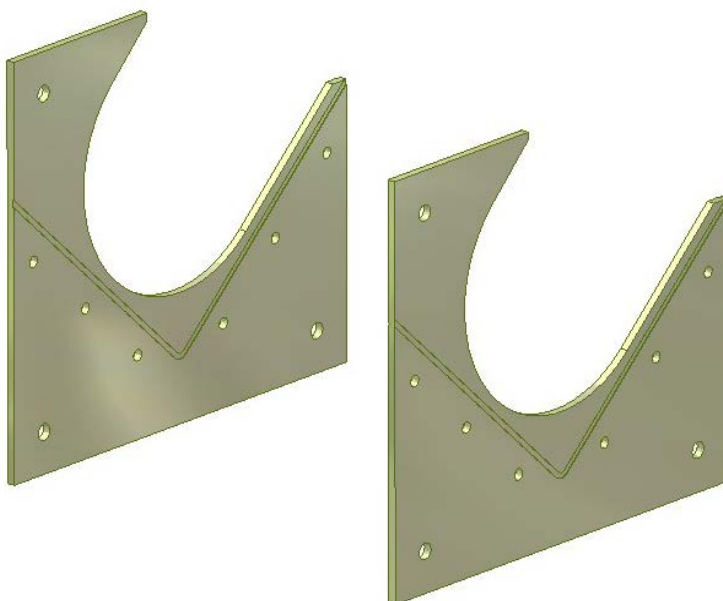


F PNZ 04 D...

14mm for 22÷110mm spool lengths

➤ **F TESTE 00** "FLANGE LOADER HEADS"

The machine is provided with two fixed loaders that can contain a number of different flange dimensions, but to adjust the machine to each different size it is necessary to replace the relative flange loader heads. These clamps must be engineered or customised to all the customer flange sizes, so that they need to be changed as least frequently as possible. The flange diameters must be at least 10mm bigger than the core diameter.



F TESTE Flange Loader Heads

OTHER OPTIONAL DEVICES FOR THE STANDARD MACHINE VERSION

➤ **DBF FOT 00** “LINE DISCHARGE PHOTOCELL”

In order to synchronize the machine to the production line, it is necessary to install the automatic start-stop photocell at line discharge for signalling to the next in-line machine that it can proceed with the work cycle.

“TEMA srl” hereby warrants for the perfect running of its machines, but cannot vouch for the gluing quality which is solely dependent on a combination of three factors: i.e. on the type of glue, on the cardboard quality used for the core and the flanges and on the size of the surface that needs to be glued. We are available at all times for tests and suggestions aimed at getting the best possible production results.

CHARACTERISTICS OF THE TUBE CORES

CORE DIAMETER	30÷80mm
CORE LENGTH (<i>internal spool size</i>)	8÷130mm 8÷110mm with “TATU 100” machine 8÷200mm with “TATU 200” machine
FLANGE DIAMETER	60÷180mm
MAXIMUM QUANTITY OF FLANGES	200mm for each loader unit (<i>the number of flanges depends on the relative flange thickness</i>)

TECHNICAL FEATURES

POWER SUPPLY VOLTAGE	3x230V+T 3x400V+T 50÷60Hz 2kW
COMPRESSED AIR REQUIREMENTS	6÷10bar 100 Nl per minute
HOURLY PRODUCTION OUTPUT	550÷650 pieces/hour (<i>can vary, based on the type of glue being used</i>)
OVERALL DIMENSIONS	1800 x 950 x h 2030mm
NET WEIGHT	250kg

The features described above may vary and must be confirmed based on your products.